



*Free Spirit*

## Twinkle Twinkle Quilt

Featuring Cotswold Holiday by  
the Original Morris & Co.

**Collection:** Cotswold Holiday by  
the Original Morris & Co.

**Technique:** Pieced

**Skill Level:** Advanced Beginner

**Finished Sizes:**  
Finished Size:  
48" x 60" (1.22m x 1.52m)  
Finished Block Size:  
6" x 6" (15.24cm x 15.24cm)

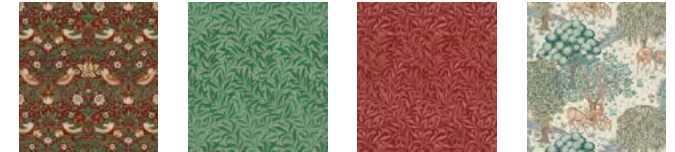
*All possible care has been taken to ensure the accuracy of this pattern. We are not responsible for printing errors or the manner in which individual work varies. Please read the instructions carefully before starting this project. If kitting, it is recommended a sample is made to confirm accuracy.*



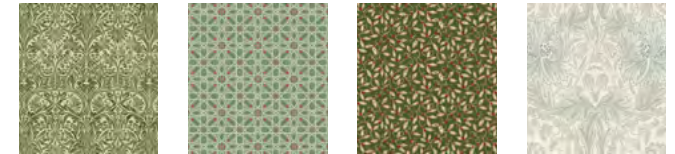
Project designed by Lucy A. Fazely | Tech edited by Alison M. Schmidt

## Fabric Requirements

DESIGN	COLOR	ITEM ID	YARDAGE
(A) Mini Strawberry Thief	Wine	PWWM002.WINE	¼ yard (0.23m)
(B) Willow Boughs	Green	PWWM030.GREEN	1 yard (0.91m)
(C) Willow Boughs	Red	PWWM030.RED*	1 yard (0.91m)
(D) The Brook	Cream	PWWM051.CREAM	⅛ yard (0.11m)
(E) Medium Bluebell	Green	PWWM093.GREEN	⅛ yard (0.11m)
(F) Mini Brophy Trellis	Sage	PWWM094.SAGE	⅛ yard (0.11m)
(G) Mistletoe	Green	PWWM095.GREEN	⅓ yard (0.30m)
(H) Pure Honeysuckle & Tulip	Ivory	PWWM032.IVORY	3⅓ yards (3.05m)



(A) (B) (C) (D)



(E) (F) (G) (H)

\* includes binding

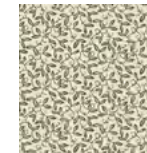
## Backing (Purchased Separately)

**44" (1.12m) wide**

Mistletoe Cream PWWM095.CREAM 3½ yards (3.20m)

**OR**

**108" (2.74m) wide** 1¾ yards (1.60m)



Backing

44"

## Additional Recommendations

- 100% cotton thread in colors to match
- 56" x 68" (1.42m x 1.73m) quilt batting

### Cutting

**WOF = Width of Fabric**

**Fabric A, cut:**

- (2) 2½" x WOF; subcut
- (28) 2½" squares

**Fabric B, cut:**

- (18) 1½" x WOF; subcut
- (464) 1½" squares

**Fabric C, cut:**

- (7) 2½" x WOF for binding
- (1) 2½" x WOF; subcut
- (16) 2½" squares
- (5) 1½" x WOF; subcut
- (112) 1½" squares

**Fabric D, cut:**

- (1) 3½" x WOF; subcut
- (8) 3½" squares

**Fabric E, cut:**

- (1) 2½" x WOF; subcut
- (16) 2½" squares

**Fabric F, cut:**

- (1) 2½" x WOF; subcut
- (12) 2½" squares

**Fabric G, cut:**

- (4) 2" x WOF; subcut
- (64) 2" squares

**Fabric H, cut:**

- (24) 2½" x WOF; subcut
- (58) 2½" x 6½" pieces
- (58) 2½" x 4½" pieces
- (112) 2½" squares
- (5) 2" x WOF; subcut
- (32) 2" x 3½" pieces
- (32) 2" squares
- (24) 1½" x WOF; subcut
- (232) 1½" x 2½" pieces
- (232) 1½" squares

### Instructions

**Note:** Use a ¼" seam allowance throughout. Sew all pieces with right sides together and raw edges even using matching thread.

#### Block Construction

1. Draw a diagonal line across the wrong side of 2 **Fabric G** 2" squares. Arrange a marked square right sides together on 1 end of a **Fabric H** 2" x 3½" piece. Stitch along the marked line. Trim seam allowance to ¼". Press corner out. Repeat on the opposite end. Make a total of 32 Unit 1a (2" x 3½" unfinished). **Fig. 1**

**Fig. 1**



2. In the same manner, make 232 Unit 1b each with 2 **Fabric B** 1½" squares and a **Fabric H** 1½" x 2½" piece (1½" x 2½" unfinished). **Fig. 2**

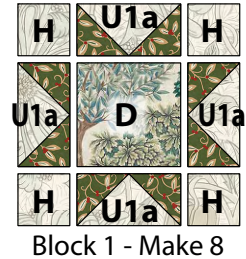
**Fig. 2**  
Unit 1b  
Make 232

3. In the same manner, make 56 Unit 1c each with 2 **Fabric C** 1½" squares and a **Fabric H** 2½" square, so C triangles are on adjoining edges of the H square. (2½" square unfinished). **Fig. 3**

**Fig. 3**  
Unit 1c  
Make 56

4. Arrange a **Fabric D** 3½" square, 4 **Fabric H** 2" squares, and 4 Unit 1a in 3 rows as shown. Stitch into rows. Sew rows together. Make a total of 8 Block 1 (6½" square unfinished). **Fig. 4**

**Fig. 4**



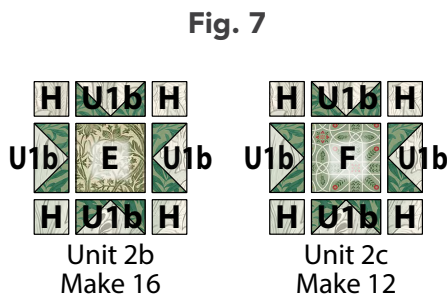
5. Arrange 1 **Fabric A** 2½" square, 4 **Fabric H** 2½" squares, and 4 Unit 1c in 3 rows as shown. Stitch into rows. Sew rows together. Make a total of 14 Block 2 (4½" square unfinished). **Fig. 5**



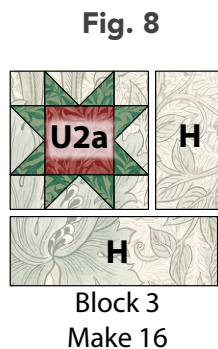
6. Arrange 1 **Fabric C** 2½" square, 4 **Fabric H** 1½" squares, and 4 Unit 1b in 3 rows as shown. Stitch into rows. Sew rows together. Make a total of 16 Unit 2a (4½" square unfinished). **Fig. 6**



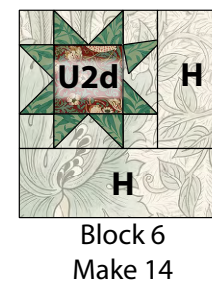
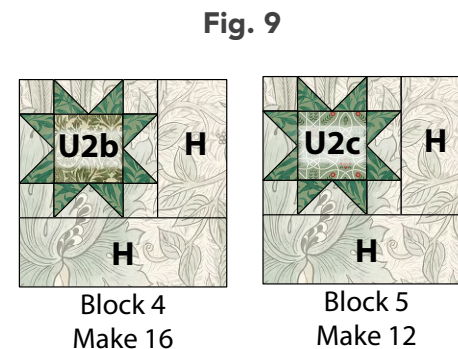
7. In the same manner, make 16 Unit 2b, 12 Unit 2c, and 14 Unit 2d with center square fabrics indicated. **Fig. 7**



8. Stitch a **Fabric H** 2½" x 4½" piece to the right-hand side of 1 Unit 2a. Add a **Fabric H** 2½" x 6½" piece to the bottom. Make a total of 16 Block 3 (6½" square unfinished). **Fig. 8**



9. In the same manner, make 16 Block 4, 12 Block 5, and 14 Block 6 with **Fabric H** pieces and units indicated. **Fig. 9**



## Quilt Top Assembly

10. Noting **Quilt Layout** diagram (page 6), arrange the blocks into 10 horizontal rows of 8 blocks each, noting placement and orientation of block.
11. Sew the blocks into rows, backstitching at top of top row and bottom of bottom row. Sew rows together. Press seams in each row in the same direction, and alternate direction from row to row so seams will nest.
12. Sew rows together. Backstitch at both ends of seams.

## Finishing

13. Sew together the 2½" **Fabric C** binding strips end-to-end with diagonal seams. Press seams open. Press the binding strip in half wrong sides together.
14. Layer backing (wrong side up), batting, and quilt top (right side up). Baste the layers together and quilt as desired. Trim excess batting and backing even with the top after quilting is completed.
15. Leaving an 8" tail of binding, sew the binding to the top of the quilt through all layers matching all raw edges. Miter corners. Stop approximately 12" from where you started. Lay both loose ends of binding flat along quilt edge. Where the loose ends meet, fold them back on themselves and press to form a crease. Using this crease as your stitching line, sew the two open ends of the binding right sides together. Trim seam to ¼" and press open. Finish sewing binding to quilt.
16. Turn the binding to the back of quilt and hand-stitch in place.



## Quilt Layout

