



Featuring February 2024 by Kaffe Fassett Collective

U Turn Quilt - Pastel

Finished Size: 52" x 76" (1.32m x 1.93m)

Project designed by Debbie Bowles - Maple Island Quilts

Purchase pattern at mapleislandquilts.com

Technique: Pieced | Skill Level: Advanced Beginner



U Turn Quilt - Pastel

Fabric Requirements

DESIGN	COLOR	ITEM ID	YARDAGE
(A) Paisley Flower	Pastel	PWGP200.PASTEL**	1¼ yards (1.14m)
(B) Square Dance	Red	PWGP203.RED*	¾ yard (0.69m)
(C) Reflections	Brown	PWBM087.BROWN	½ yard (0.46m)
(D) Reflections	Lavender	PWBM087.LAVENDER	½ yard (0.46m)
(E) Reflections	Lime	PWBM087.LIME	½ yard (0.46m)
(F) Reflections	Moss	PWBM087.MOSS	½ yard (0.46m)
(G) Reflections	Pastel	PWBM087.PASTEL	1½ yards (1.37m)

* includes binding

** this yardage allows for LOF cut due to direction of fabric

Backing (Purchased Separately)

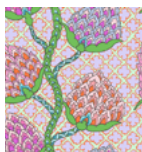
44" (1.12m) wide

Garden Party Pink PWPJ020.PINK 4¼ yards (3.89m)

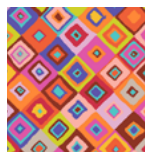
OR

108" (2.74m) wide

Japanese Chrysanthemum Magenta QBPJ003.MAGENTA 2¼ yards (2.06m)



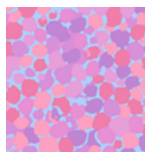
(A)



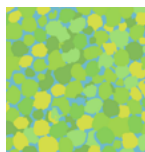
(B)



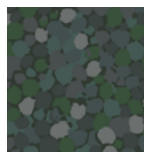
(C)



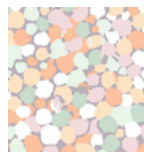
(D)



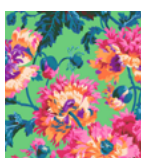
(E)



(F)



(G)



Backing
44"



Backing
108"

*If kitting, refer to the final pattern for yardage amounts,
it is recommended that a sample is made to confirm accuracy.*