



Featuring Ravel by e bond

Up & @ 'em! Quilt

Finished Size: 66" x 78" (1.67m x 1.98m)

Project designed by Art East Quilting Co.

Purchase pattern at arteastquiltingco.com

Technique: Pieced, with template | Skill Level: Advanced Beginner



Up & @ 'em! Quilt

Fabric Requirements

DESIGN	COLOR	ITEM ID	YARDAGE
(A) Unravel	Ink	PWEB034.INK	3½ yards (3.20m)
(B) Small Intertwine	Watermelon	PWEB042.WATERMELON*	3½ yards (3.20m)
(C) Scribble	Charcoal	PWEB044.CHARCOAL	1 yard (0.91m)
(D) Memory	Candy	PWEB046.CANDY	1 yard (0.91m)

* includes binding

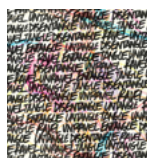
Backing (Purchased Separately)

44" (1.12m) wide

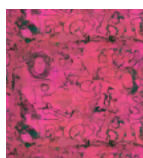
Ebb Frost PWEB037.FROST 4½ yards (4.11m)

OR

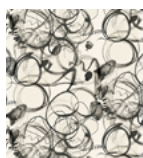
108" (2.74m) wide 2 yards (1.83m)



(A)



(B)



(C)



(D)



Backing
44"

*If kitting, refer to the final pattern for yardage amounts,
it is recommended that a sample is made to confirm accuracy.*