

Featuring Vintage Cloth by Sew Kind of Wonderful

# Tripping Out Quilt

Finished Size: 64" x 84" (1.63m x 2.13m)

*Project designed by Sew Kind of Wonderful*

*Purchase pattern at [sewkindofwonderful.com](http://sewkindofwonderful.com)*

**Technique:** Pieced with the Quick Straight Ruler by Sew Kind of Wonderful | **Skill Level:** Advanced Beginner



# Tripping Out Quilt

## Fabric Requirements

DESIGN	COLOR	ITEM ID	YARDAGE
(A) Brooke	Chateau	PWSK072.CHATEAU	2½ yards (2.29m)
(B) Brittany	Chateau	PWSK073.CHATEAU	½ yard (0.46m)
(C) Cobblestone	Chateau	PWSK074.CHATEAU	½ yard (0.46m)
(D) Honey	Chateau	PWSK075.CHATEAU	½ yard (0.46m)
(E) Licorice	Chateau	PWSK076.CHATEAU	½ yard (0.46m)
(F) Tickets	Chateau	PWSK077.CHATEAU	½ yard (0.46m)
(G) Tower	Chateau	PWSK078.CHATEAU	½ yard (0.46m)
(H) Tracks	Chateau	PWSK079.CHATEAU	½ yard (0.46m)
(I) Crepes	Chateau	PWSK080.CHATEAU	½ yard (0.46m)
(J) Canals	Vondel	PWSK081.VONDEL	½ yard (0.46m)
(K) Bridges	Vondel	PWSK082.VONDEL	½ yard (0.46m)
(L) Ginger	Vondel	PWSK083.VONDEL	½ yard (0.46m)
(M) Moss	Vondel	PWSK084.VONDEL	½ yard (0.46m)
(N) Overcast	Vondel	PWSK085.VONDEL	2½ yards (2.29m)
(O) Tea House	Vondel	PWSK086.VONDEL*	1¼ yards (1.14m)
(P) Sails	Vondel	PWSK087.VONDEL	½ yard (0.46m)
(Q) Wall Flower	Vondel	PWSK088.VONDEL	½ yard (0.46m)
(R) Pond	Vondel	PWSK089.VONDEL	½ yard (0.46m)

\* includes binding

## Backing (Purchased Separately)

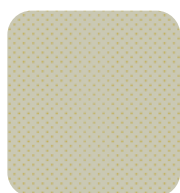
**54" (1.12m) wide**

Pond	Vondel	CLSK008.VONDEL	5 yards (4.57m)
------	--------	----------------	-----------------

*Fabric Swatches on next page...*

*If kitting, refer to the final pattern for yardage amounts,  
it is recommended that a sample is made to confirm accuracy.*

## Fabric Swatches



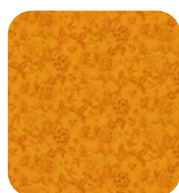
(A)



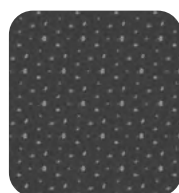
(B)



(C)



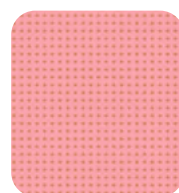
(D)



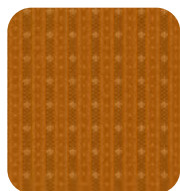
(E)



(F)



(G)



(H)



(I)



(J)



(K)



(L)



(M)



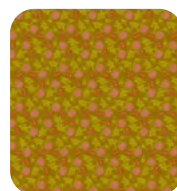
(N)



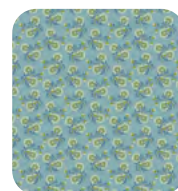
(O)



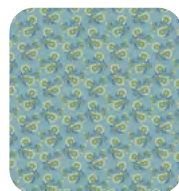
(P)



(Q)



(R)



Backing  
54"