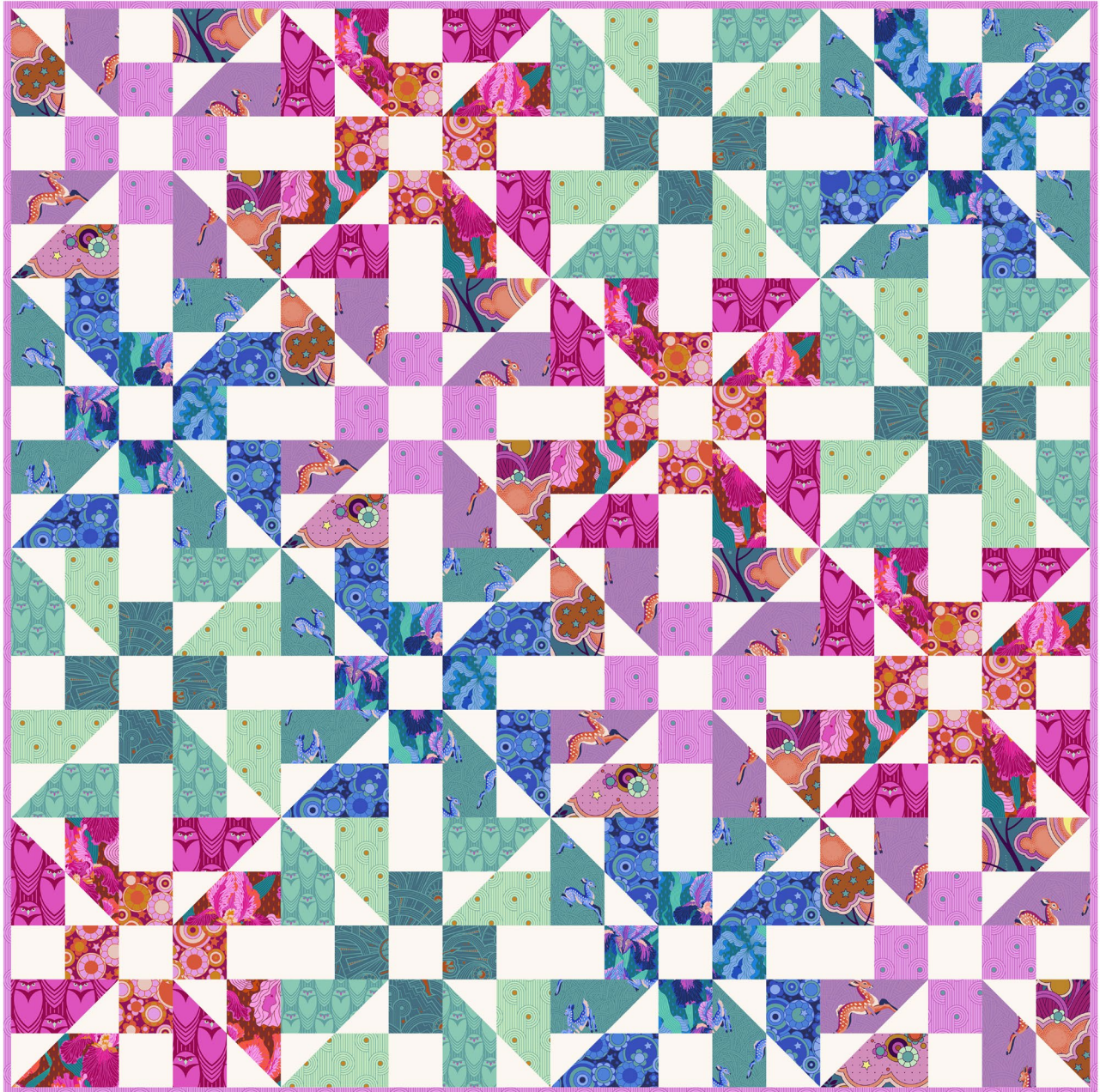


Free Spirit 



Featuring Mythical by Stacy Peterson

Waterfall Quilt

Finished Size: 60" x 60" (1.52m x 1.52m)

Project designed by Linda & Carl Sullivan - Colourwerx

Purchase pattern at colourwerx.com

Technique: Pieced | Skill Level: Advanced Beginner

Fabric Requirements

DESIGN	COLOR	ITEM ID	YARDAGE
(A) Fabled Forest	Teal	PWST013.XTEAL	3/8 yard (0.34m)
(B) Wild Meadow	Lavender	PWST015.XLAVENDER	3/8 yard (0.34m)
(C) Small Wild Meadow	Teal	PWST016.XTEAL	3/8 yard (0.34m)
(D) Mythical Iris	Magenta	PWST017.XMAGENTA	3/8 yard (0.34m)
(E) Small Mythical Iris	Deep Blue	PWST018.XDEEPBLUE	3/8 yard (0.34m)
(F) Mythical Bloom	Blue	PWST020.XBLUE	3/8 yard (0.34m)
(G) Mythical Bloom	Orange	PWST020.XORANGE	3/8 yard (0.34m)
(H) Powerhouse	Dark Teal	PWST021.XDARKTEAL	3/8 yard (0.34m)
(I) Owl See You	Magenta	PWST023.XMAGENTA	3/8 yard (0.34m)
(J) Small Owl See You	Aqua	PWST024.XAQUA	3/8 yard (0.34m)
(K) Fiddlehead	Carnation	PWST025.XCARNATION*	1 yard (0.91m)
(L) Fiddlehead	Mint	PWST025.XMINT	3/8 yard (0.34m)
(M) Designer Essential Solid	Mist	CSFSESS.MISTX	2 1/8 yards (1.94m)

* includes binding

Backing (Purchased Separately)

44" (1.12m) wide

Small Mythical Iris

Deep Blue

PWST018.XDEEPBLUE

4 yards (3.66m)

OR

108" (2.74m) wide

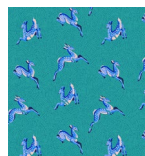
2 yards (1.83m)



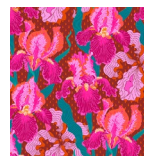
(A)



(B)



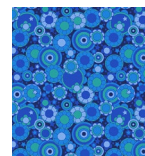
(C)



(D)



(E)



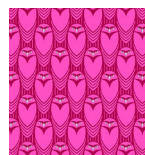
(F)



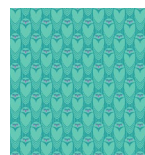
(G)



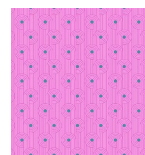
(H)



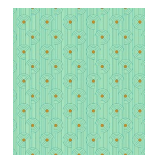
(I)



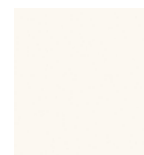
(J)



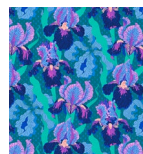
(K)



(L)



(M)



Backing
44"

If kitting, refer to the final pattern for yardage amounts, it is recommended that a sample is made to confirm accuracy.