



Featuring Wonderland by Tim Holtz

Winter Dream Quilt

Finished Size: 72" x 84" (1.83m x 2.13m)

Project designed by Charisma Horton - Charisma's Corner

Purchase pattern at charismascorner.com

Technique: Pieced | Skill Level: Advanced Beginner

Fabric Requirements

DESIGN	COLOR	ITEM ID	YARDAGE
(A) 25th	Multi	FNTH001.MULTI*	3 yards (2.74m)
(B) Xmas Stripe	Multi	FNTH002.MULTI	½ yard (0.46m)
(C) Jolly Holly	White	FNTH003.WHITE	¾ yard (0.34m)
(D) Foulard	Multi	FNTH004.MULTI	½ yard (0.46m)
(E) Winter Plaid	Multi	FNTH005.MULTI	1½ yards (1.37m)
(F) Tidings Type	Red	FNTH006.RED	½ yard (0.46m)
(G) Tidings Type	White	FNTH006.WHITE	3½ yards (3.20m)
(H) English Holly	Green	FNTH007.GREEN	½ yard (0.46m)
(I) Leaf Medallion	Green	FNTH008.GREEN	½ yard (0.46m)
(J) Holiday Plaid	Neutral	FNTH009.NEUTRAL	1 yard (0.91m)
(K) Flannel Solid	Pine Fresh	FNTP007.PINEFRESH	¾ yard (0.60m)
(L) Flannel Solid	Ink	FNTP007.INK	¼ yard (0.23m)

* includes binding

Backing (Purchased Separately)

44" (1.12m) wide

25th Multi FNTH001.MULTI 5 yards (4.57m)

OR
108" (2.74m) wide 2½ yards (2.29m)



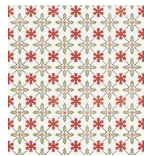
(A)



(B)



(C)



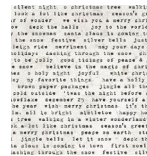
(D)



(E)



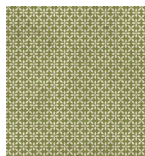
(F)



(G)



(H)



(I)



(J)



(K)



(L)



Backing
44"

If kitting, refer to the final pattern for yardage amounts, it is recommended that a sample is made to confirm accuracy.