

Featuring Witchy Ways by Cori Dantini

Hocus Pocus Quilt

Finished Size: 41" x 54" (1.04m x 1.37m)

Project designed by Jenice Belling - Quilted Garden Designs

Purchase pattern at quiltedgarden.com

Technique: Pieced | Skill Level: Advanced Beginner



Hocus Pocus Quilt

Fabric Requirements

DESIGN	COLOR	ITEM ID	YARDAGE
(A) Witchy Ways	Panel	PWCD140.XPANEL	1 PANEL
(B) Skull Flowers	Black	PWCD144.XBLACK	½ yard (0.46m)
(C) Meow at the Moon	Gold	PWCD145.XGOLD	½ yard (0.46m)
(D) Starry Skulls	Black	PWCD146.XBLACK	½ yard (0.46m)
(E) Witchy Frriends	Stone	PWCD147.XSTONE	¼ yard (0.23m)
(F) Striped	Multi	PWCD148.XMULTI*	⅔ yard (0.61m)
(G) Witchy Kitty	Pumpkin	PWCD149.XPUMPKIN	¼ yard (0.23m)

* includes binding

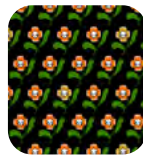
Backing (Purchased Separately)

44" (1.12m) wide

Witchy Kitty Pumpkin PWCD149.XPUMPKIN 1¾ yards (1.60m)



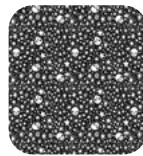
(A)



(B)



(C)



(D)



(E)



(F)



(G)



Backing
44"

*If kitting, refer to the final pattern for yardage amounts,
it is recommended that a sample is made to confirm accuracy.*