



Free Spirit 

Perched Quilt

Featuring *Sweet Dreams* by Anna Maria Horner

Birds of a feather perch together in diagonal rows across the surface of this pieced quilt. The bright colors of the prints in Anna Maria Horner's *Sweet Dreams* collection create an explosion of color surrounding the Bird Blocks that pop from the surrounding forest. Although it may appear more complex, the quilt is made with only two different blocks, each one composed of triangles. Sandwich-piecing methods make quick work of the sewing. This is s one fine feathered flock, wouldn't you agree?

Collection:	Sweet Dreams by Anna Maria Horner
Technique:	Piecing, Quilting
Skill Level:	Advanced Beginner
Crafting Time:	Week*
Finished Size:	Finished Quilt: 70" x 90" (177.8cm x 228.6cm)
	Finished Block: 10" x 10" (25.40cm x 25.40cm)

*Crafting time based on Advanced Beginner skill level



Project designed by Brittney Anderson

Tech edited by Barbara Weiland

Fabric Requirements

DESIGN	COLOR	ARTICLE CODE	YARDAGE
(A) Cacophony	Charcoal	PWAH118.CHARC	1 yard (91.44cm)
(B) Cacophony	Dusk	PWAH118.DUSKX	1 yard (91.44cm)
(C) Cacophony	Saffron	PWAH118.SAFFR	1 yard (91.44cm)
(D) Source Code	Glisten	PWAH119.GLIST	¾ yard (68.58cm)
(E) Source Code	Glow	PWAH119.GLOWX	¾ yard (68.58cm)
(F) Source Code	Spark	PWAH119.SPARK	¾ yard (68.58cm)
(G) Garden Prism	Candy	PWAH121.CANDY	¾ yard (68.58cm)
(H) Garden Prism	Lichen	PWAH121.LICHE	¾ yard (68.58cm)
(I) Garden Prism	Plum	PWAH121.PLUMX	¾ yard (68.58cm)
(J) Lacey	Bubble Gum	PWAH122.BUBBL	¾ yard (68.58cm)
(K) Lacey	Moss	PWAH122.MOSSX	¾ yard (68.58cm)
(L) Lacey	Periwinkle	PWAH122.PERIW	¾ yard (68.58cm)
(M) Ladder	Eggplant	PWAH123.EGGPL	¾ yard (68.58cm)
(N) Ladder	Sea	PWAH123.SEAXX	¾ yard (68.58cm)
(O) Ladder	Space	PWAH123.SPACE	¾ yard (68.58cm)
(P) Remains	Midnight	PWAH125.MIDNI	¾ yard (68.58cm)*

* includes binding

Backing (Purchased Separately)

44" (111.76cm)

Cacophony Saffron PWAH118.SAFFR 5¾ yards (5.26m)

OR

108" (274.32cm) 2⅞ yards (2.63m)

Additional Requirements

- Coats® 100% Cotton Thread
- 78" x 98" (198.12cm x 248.92m) quilt batting
- Rotary cutter, mat, ruler
- Fabric marking pen or fine-point pencil
- Basic sewing and pressing supplies



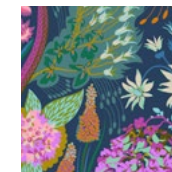
(A)



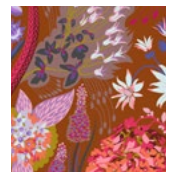
(B)



(C)



(D)



(E)



(F)



(G)



(H)



(I)



(J)



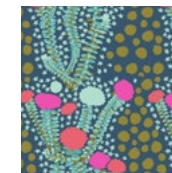
(K)



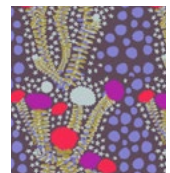
(L)



(M)



(N)



(O)



(P)



Backing
44"
(111.76cm)

Cutting

Fabrics A, B, and C, cut from EACH:

(3) 11" x WOF; sub-cut (7) 11" (27.94cm) squares.

Fabric D-O, cut from EACH:

(2) 11½" x WOF; sub-cut (4) 11½" (29.21cm) squares.

Fabric P, cut:

(9) 2½" x WOF (6.35cm x WOF) strips for the binding

Sewing Instructions

All seam allowances are ¼" (.64cm) unless otherwise noted. Place fabrics right sidestogether for stitching.

All figures shown on page 4

Note: This quilt is composed of two different 10" x 10" (25.40cm x 25.40cm) blocks (see **Fig. 2c** and **Fig. 3c** below). Bird Blocks alternate with the Quarter-Square-Triangle Blocks in a specific pattern to create the diagonal rows of birds across of the surface of the quilt. Since the bird prints are one-way directional, special care is required to place the print correctly when cutting the required triangles and assembling the Bird Blocks. Care is also required when arranging the blocks in the required rows so that the Bird Blocks create the diagonal pattern and they are all correctly positioned.

Make the Half-Square-Triangle (HST) Units

1. Set aside the 11" (27.94cm) squares of the Bird Prints A, B, and C for the Bird Blocks.
2. Use (1) 11½" (29.21cm) square each of **Fabric G** and **Fabric N**. Draw a diagonal line from corner to corner on the wrong side of the lighter colored square. With right sides together, stitch ¼" (.64cm) away from both sides of the marked line (**Fig. 1a**). Press to set the stitches and then cut along the marked line

to create two HST units (**Fig. 1b**). Open the units and press the seam allowances toward the darker fabric. Trim and square up the units to measure 11" (27.94cm) square, making sure the diagonal line is centered in the trimmed square and ends precisely at the opposite corners of the square (**Fig. 1c**). Repeat 3 times for a total of 8 matching HST.

3. Repeat step 1 with 11½" (29.21cm) squares in each of the following fabric combinations:

Fabric E and **Fabric L**

Fabric H and **Fabric O**

Fabric D and **Fabric J**

Fabric I and **Fabric M**

Fabric F and **Fabric K**

Make the Quarter-Square-Triangle Blocks

Refer to page 4 for all illustrations for steps 4-6.

4. Select 2 HST units from steps 2-3, each made of 2 different fabrics, for a total of 4 different prints. With right sides together, align the two HST units so their seams run in the same direction and nest into each other. On the upper unit, draw a diagonal line from corner to corner so that it crosses the already-stitched seamline. Stitch ¼" (.64cm) away from both sides of the marked line (**Fig. 2a**). Press to set the stitches and cut apart on the line to create 2 QST blocks (**Fig. 2b**). Open the units and press the seam allowances toward the darker fabric. Trim to square up the block to 10½" (26.67cm) square, making sure the diagonal line is centered in the trimmed square and ends precisely at the opposite corners of the square (**Fig. 2c**). Repeat 10 more times to make a total of 22 QST. You will use only 21 of these blocks in this quilt.

Make the Bird Blocks

5. Place (1) 11" (27.94cm) **Fabric A** square face down on (1) 11" (27.94cm) HST with all edges aligned.

Make sure the birds are perched upright (heads toward the upper edge of square). Draw a diagonal line from the upper left corner to the lower right corner, making sure it is perpendicular to the seamline of the HST unit. Stitch ¼" (.64cm) away from both sides of the line (**Fig. 3a**). Cut apart on the drawn line (**Fig. 3b**). Open each unit and press the seam allowances toward the large triangle. Trim to square up the block to 10½" (26.67cm) square, making sure the diagonal line is centered in the trimmed square and ends precisely at the opposite corners of the square (**Fig. 3c**). Note the bird position in each triangle. Repeat to make a total of 14 Bird Blocks with **Fabric A** triangles.

6. Repeat step 5 with the remaining 11" (27.94cm) squares of **Fabric B** and **Fabric C** bird prints to make a total of 14 each.

Quilt Top Assembly

7. Refer to the **Quilt Layout** on page 5. Arrange the QST Blocks and the Bird Blocks in alternating fashion into 9 horizontal rows of 7 blocks each so that the Bird Triangle Blocks lie in the diagonal rows. Pay attention to the orientation of the birds in each triangle. All birds must be perched upright in their triangles.

Note: Unless you followed the Quilt Layout to copy the print positioning in each of the blocks, your blocks may be made of different print combinations and that's OK. Play with the block layout and positioning until all birds are upright and you are happy with how the QST Blocks are positioned. You will have leftover blocks to set aside for another project.



COATS

8. Sew the blocks together in horizontal rows. Press the seam allowances in opposite directions from row to row so the seams will nest into each other when joining the rows.
9. Sew the rows together to complete the quilt top. Press the seam allowances toward the lower edge of the quilt top.

Finishing

10. Prepare a 78" x 98" (198.12cm x 248.92m) backing panel. Press the backing and the quilt top and trim away any stray threads.
11. Layer the backing, batting, and quilt top. Baste the layers together and quilt as desired. Trim the batting and backing even with the quilt-top edges.
12. Sew the **Fabric P** binding strips together with diagonal seams to make one long binding strip. Fold the binding in half lengthwise with wrong sides together and press.
13. Sew the binding to the quilt top, with all raw edges even and miter the corners as you reach them. Turn the binding to the back of the quilt and hand-stitch in place.

Fig. 1

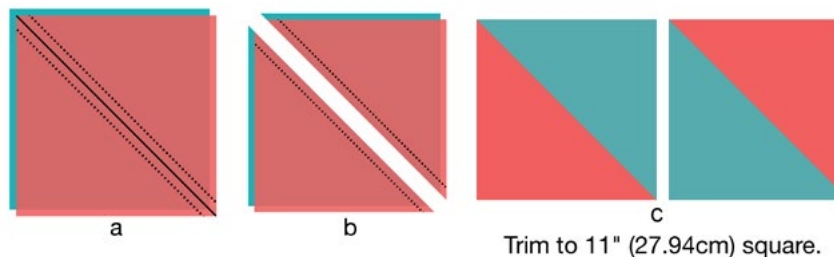


Fig. 2

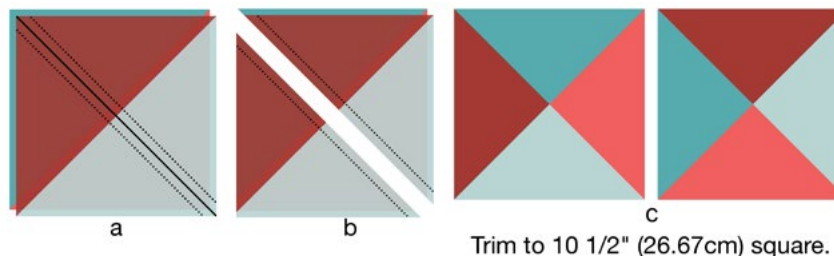
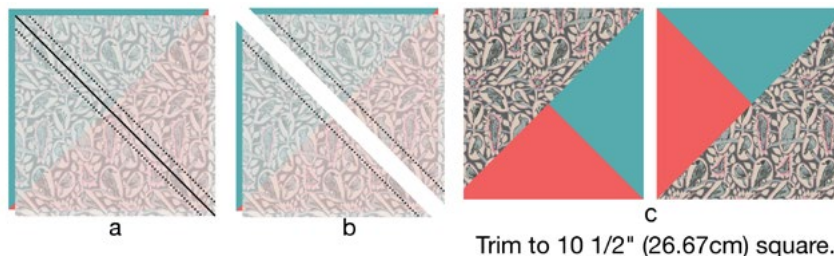


Fig. 3



Quilt Layout

