

FreeSpirit



Featuring Holidays Past by Tim Holtz

Santa's Hat Shop Quilt

Finished Size: 60" x 60" (1.52m x 1.52m)

Project designed by Melissa Mortenson - Polka Dot Chair-Recolored by FreeSpirit Fabrics

Purchase pattern at polkadotchair.com

Technique: Pieced | Skill Level: Advanced Beginner

freespiritfabrics.com



Santa's Hat Shop Quilt

Fabric Requirements

DESIGN	COLOR	ITEM ID	YARDAGE
(A) Holiday Collage	Multi	PWTH195.MULTI	¼ yard (0.23m)
(B) Woodland Collage	Multi	PWTH197.MULTI	¼ yard (0.23m)
(C) Lodge	Multi	PWTH198.MULTI	¼ yard (0.23m)
(D) Postcard Collage	Multi	PWTH199.MULTI	¼ yard (0.23m)
(E) Winter Toile	Neutral	PWTH200.NEUTRAL	1 yard (0.91m)
(F) Poinsettia Print	Multi	PWTH201.MULTI	¼ yard (0.23m)
(G) Berry Branch	Red	PWTH202.RED	1½ yards (1.37m)
(H) Christmas Clippings	Neutral	PWTH203.NEUTRAL*	½ yard (0.46m)
(I) Pine Chart	Green	PWTH204.GREEN	¼ yard (0.23m)
(J) Festive Ledger	Red	PWTH205.RED	1¾ yards (1.60m)
(K) Confections	Green	PWTH206.GREEN	¼ yard (0.23m)
(L) Multi Stripe	Multi	PWTH207.MULTI	¼ yard (0.23m)
(M) Taped Gingham	Black	PWTH208.BLACK	¼ yard (0.23m)
(N) Worn Croc	Wildberry	PWTH020.WILDBERRY	1 yard (0.91m)
(O) Provisions	Rose	PWTH115.8ROSE	1½ yards (1.37m)
(P) Woodgrain	Red	PWTH168.RED	2 yards (1.83m)
(Q) Provisions	Crimson	PWTH115.8CRIM	1 yard (0.91m)
(R) Symphony	Neutral	PWTH022.NEUTR	¼ yard (0.23m)

* includes binding

Backing (Purchased Separately)

44" (1.12m) wide

Woodland Collage Multi PWTH197.MULTI 3¾ yards (3.43m)

OR

108" (2.74m) wide

Holidays Past Collage Multi QBTH012.MULTI 2 yards (1.83m)

Fabric Swatches on next page...

*If kitting, refer to the final pattern for yardage amounts,
it is recommended that a sample is made to confirm accuracy.*

Fabric Swatches



(A)



(B)



(C)



(D)



(E)



(F)



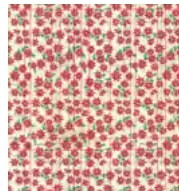
(G)



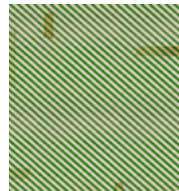
(H)



(I)



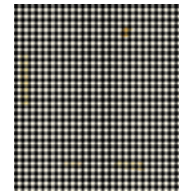
(J)



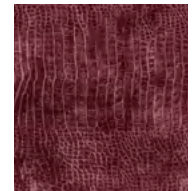
(K)



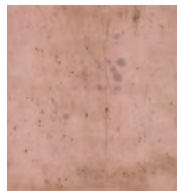
(L)



(M)



(N)



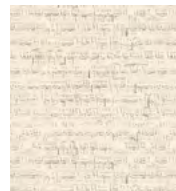
(O)



(P)



(Q)



(R)



Backing
44"



Backing
108"