

Free Spirit



Featuring Holidays Past by Tim Holtz

# Starlight Tree Farm Quilt

Finished Size: 70" x 80" (1.78m x 2.03m)

Project designed by Marcea Owen - Cotton Street Commons

Purchase pattern at [cottonstreetcommons.com](http://cottonstreetcommons.com)

Technique: Pieced and Applique | Skill Level: Advanced Beginner

[freespiritfabrics.com](http://freespiritfabrics.com)



# Starlight Tree Farm Quilt

## Fabric Requirements

DESIGN	COLOR	ITEM ID	YARDAGE
(A) Holiday Collage	Multi	PWTH195.MULTI	F8
(B) Caroler	Neutral	PWTH196.NEUTRAL	F8
(C) Woodland Collage	Multi	PWTH197.MULTI	F8
(D) Lodge	Multi	PWTH198.MULTI	FQ
(E) Postcard Collage	Multi	PWTH199.MULTI	F8
(F) Poinsettia Print	Multi	PWTH201.MULTI*	1¼ yards (1.14m)
(G) Berry Branch	Red	PWTH202.RED	FQ
(H) Pine Chart	Green	PWTH204.GREEN	F8
(I) Confections	Green	PWTH206.GREEN	FQ
(J) Multi Stripe	Multi	PWTH207.MULTI	FQ
(K) Taped Gingham	Black	PWTH208.BLACK	FQ
(L) Tiny Stars	Linen	PWTH051.LINEN	4¼ yards (3.89m)
(M) Symphony	Neutral	PWTH022.NEUTRAL	F8
(N) Provisions	Sage	PWTH115.8SAGE	FQ
(O) Cracked Shadow	Jasper	PWTH128.JASPER	FQ
(P) Alchemy	Radiant	PWTH177.RADIANT	F8

\* includes binding

## Backing (Purchased Separately)

**44" (1.12m) wide**

Winter Toile Neutral PWTH200.NEUTRAL 5 yards (4.57m)

**OR**

**108" (2.74m) wide**

Holidays Past Collage Multi QBTH012.MULTI 2½ yards (2.29m)



(A)



(B)



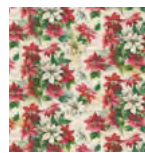
(C)



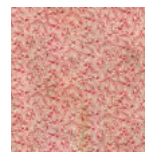
(D)



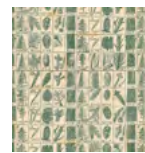
(E)



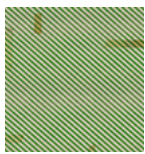
(F)



(G)



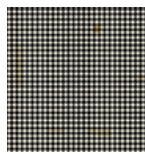
(H)



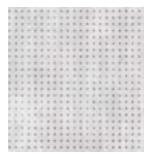
(I)



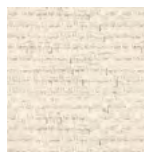
(J)



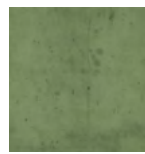
(K)



(L)



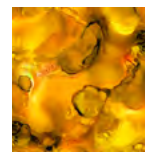
(M)



(N)



(O)



(P)



Backing  
44"



Backing  
108"

*If kitting, refer to the final pattern for yardage amounts, it is recommended that a sample is made to confirm accuracy.*